

Lighta Min

LHB4

# LED Globe Lite



**Wattage**  
18W-60W



**CCT**  
3000K-6500K



**CRI**  
>80



**Lifetime**  
50,000h



**Efficiency**  
UP TO 105 lm/W



**IP Rating**  
IP54

## Energy Saving

Up to **86%**

### Optional Aluminum Lampshade for Decorative Use

Easily attach lampshade - no tools required  
Suitable for various applications



Color Options





## Long Lifetime

Reduce Replacements & Maintenance Cost

The lifetime of LED bulb is about 6 times of CFL lamp and 40 times of incandescent lamp



Use of top brand LED chips for longer life and superior output maintenance

# Lifetime Comparison

Incandescent Lamp



1,000 hrs

10hrs/day

3.3moths/pc



X50

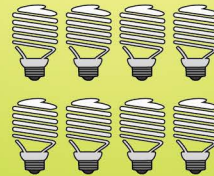
CFL Lamp



6,000 hrs

10hrs/day

1.6years/pc



X8

Lightamin LED Bulb



50,000 hrs

10hrs/day

13.7 years/pc



X1

## Long Lifetime = Greater Value for Money

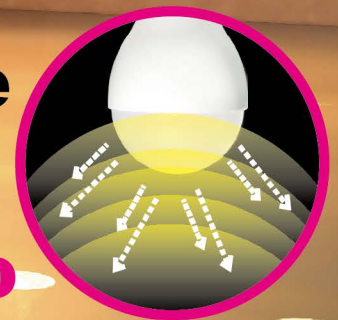


## High Light Transmittance

Achieve uniform light distribution through high transmittance PC material and special optical design.

Up to

90%



## APPLICATIONS



Office



Shop



Super Market



Restaurant



Hotel



Parking



Storage



# Compact Design & Easy to Clean

Fin-less aluminum heat sink design makes no dust accumulation and reduces operating temperature issues.



Optional Accessories

## Replacement of Traditional Lamp & Save Energy

Direct replacement of existing incandescent, halogen or CFL Lamps  
Efficiently save energy and cut down electricity bill

# Electricity Cost Comparison

Direct Replacement

Based on the same condition of brightness



150W  
US\$ 2088



32W  
US\$ 514



18W  
**US\$ 289**

Annual bill for use of 40 bulbs at 10 hrs/day  
based on \$0.11 kWh

(U.S. Electricity Rate)

Cut down  
US\$ 1799

**Save 88%**

compared to  
incandescent lamp

Cut down  
US\$ 225

**Save 44%**

compared to  
CFL lamp

**Only  
US\$289  
per year**

# Features:

High efficiency : Up to 109 lm/W

Color temperature: 3000K/4000K/5000K/6500K

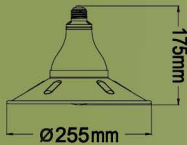
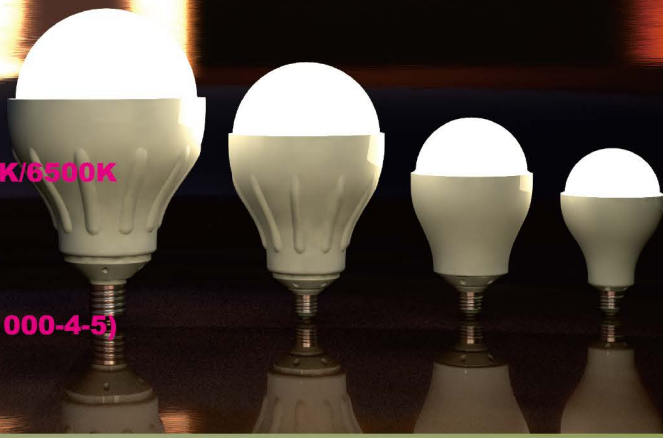
High color rendering index (CRI)>80

Wide beam angle : 130°

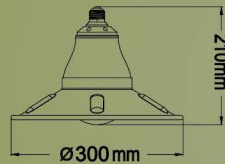
Operating temperature: -20° to +40°C

Lightning surge immunity : 2KV (IEC61000-4-5)

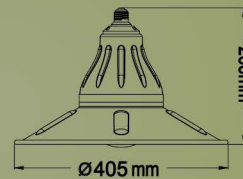
Compliance to: CCC CB CE



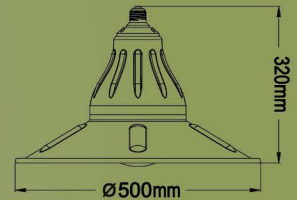
**18W**



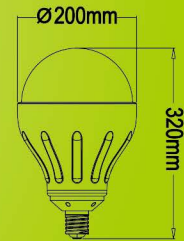
**24W/30W**



**36W/48W**



**60W**



## SPECIFICATION

Model	Power	Luminous Flux	Color Temp.	CRI	Beam Angle	Input Voltage	Input Current	Luminous Efficiency	Base	Lifetime	IP Rating	Weight	Wattage Equivalent (Incandescent)
LB418A	18W	1890lm	6500K	>80	127°	100-240V	0.08-0.19A	105lm/w	E26 E27	50,000h	IP20/IP54	236g	150W
LB418B		1890lm	5000K					105lm/w					
LB418C		1710lm	4000K					95lm/w					
LB418D		1566lm	3000K					87lm/w					
LB424A	24W	2520lm	6500K				0.10-0.25A	105lm/w			IP54	406g	200W
LB424B		2520lm	5000K					105lm/w					
LB424C		2280lm	4000K					95lm/w					
LB424D		2088lm	3000K					87lm/w					
LB430A	30W	3150lm	6500K				0.13-0.31A	105lm/w			IP54	407g	250W
LB430B		3150lm	5000K					105lm/w					
LB430C		2850lm	4000K					95lm/w					
LB430D		2610lm	3000K					87lm/w					
LB436A	36W	3780lm	6500K				0.16-0.37A	105lm/w			IP54	668g	300W
LB436B		3780lm	5000K					105lm/w					
LB436C		3492lm	4000K					97lm/w					
LB436D		3240lm	3000K					90lm/w					
LB448A	48W	5040lm	6500K	0.21-0.49A	105lm/w	IP54	669g	400W					
LB448B		5040lm	5000K		105lm/w								
LB448C		4656lm	4000K		97lm/w								
LB448D		4320lm	3000K		90lm/w								
LB460A	60W	6300lm	6500K	0.28-0.60A	105lm/w	IP54	1330g	500W					
LB460B		6300lm	5000K		105lm/w								
LB460C		5820lm	4000K		97lm/w								
LB460D		5400lm	3000K		90lm/w								



**WENTAI TECHNOLOGY CORPORATION**

6F-3, NO.123, Lane 235, Pao-chiao Rd,  
Shintien District, New Taipei City, Taiwan  
Tel: +886-2-89192318 Fax: +886-2-89192320

E-mail: [inquire@wentai.com](mailto:inquire@wentai.com)

[www.wentailighting.com](http://www.wentailighting.com)